

Instructions Manual

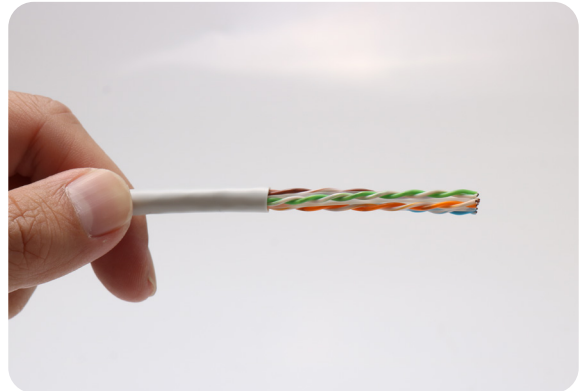
RJ45 Modular Plug Cat.6A UTP

23-24 AWG Pass Through

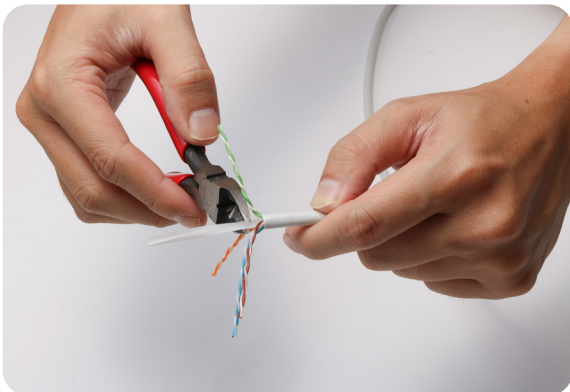
- 1 Put on the cable boot.



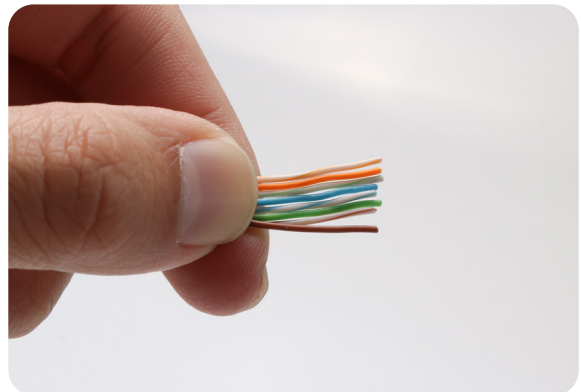
- 2 Strip approximately 30 mm of the cable jacket.



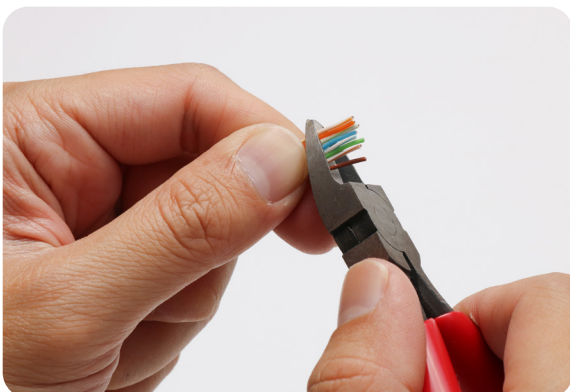
- 3 Separate the wires into 4 pairs. Cut off the cross filler by diagonal plier.



- 4 Align the 4 pair wires according to the desired wiremap.



- 5 Cut 5 mm to make the passing through easier.



- 6 Pass through the plug.



Instructions Manual

RJ45 Modular Plug Cat.6A UTP

23-24 AWG Pass Through

7 Crimp and cut the excess of the wires with specially designed RJ45 Modular Plug Crimp Tool.



8 Done! Good Job!



COLOR CODING DIAGRAM

EIA/TIA-568A

1 - White/Green

2 - Green

3 - White/Orange

4 - Blue

5 - White/Blue

6 - Orange

7 - White/Brown

8 - Brown

EIA/TIA-568B

1 - White/Orange

2 - Orange

3 - White/Green

4 - Blue

5 - White/Blue

6 - Green

7 - White/Brown

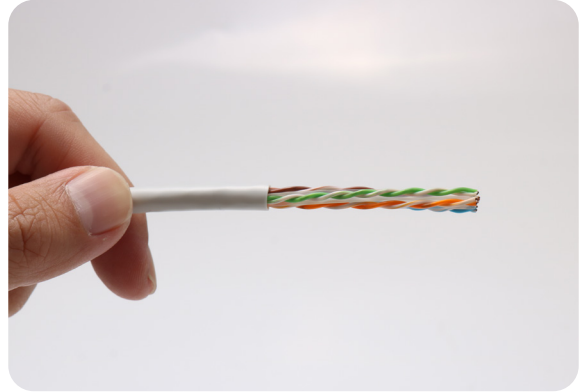
8 - Brown

Manual de Instrucciones Conector Macho RJ45 Cat.6A UTP 23-24 AWG Pasante

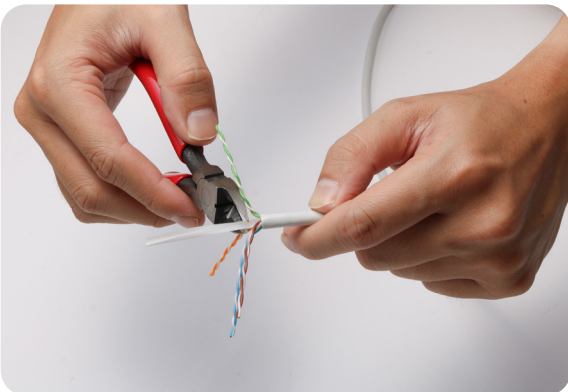
- 1 Coloque el capuchón en el cable.



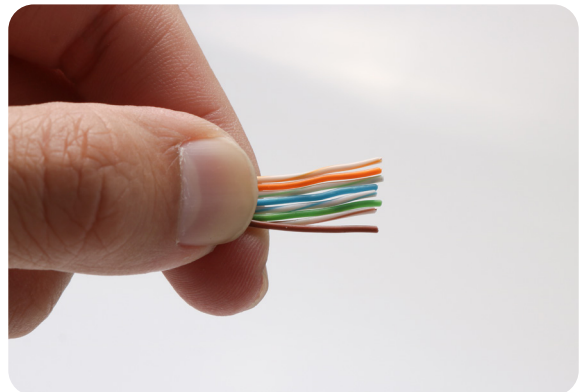
- 2 Desprenda aproximadamente 30 mm de la cubierta del cable.



- 3 Alinee los cables de los 4 pares según el esquema de cableado deseado.



- 4 Alinee los cables de los 4 pares según el esquema de cableado deseado.



- 5 Corte 5 mm para facilitar el paso.



- 6 Páselo por el conector.



Manual de Instrucciones

Conector Macho RJ45 Cat.6A UTP

23-24 AWG Pasante

7 Crimpé y corte el exceso de los cables con la Herramienta de Crimpado para Conector Modular RJ45, especialmente diseñada para este proceso.



8 ¡Listo! ¡Buen Trabajo!



DIAGRAMA DE CODIFICACIÓN DE COLORES

EIA/TIA-568A

1 - Blanco/Verde

2 - Verde

3 - Blanco/Naranja

4 - Azul

5 - Blanco/Azul

6 - Naranja

7 - Blanco/Marrón

8 - Marrón

EIA/TIA-568B

1 - Blanco/Naranja

2 - Naranja

3 - Blanco/Verde

4 - Azul

5 - Blanco/Azul

6 - Verde

7 - Blanco/Marrón

8 - Marrón

Manual de Instruções

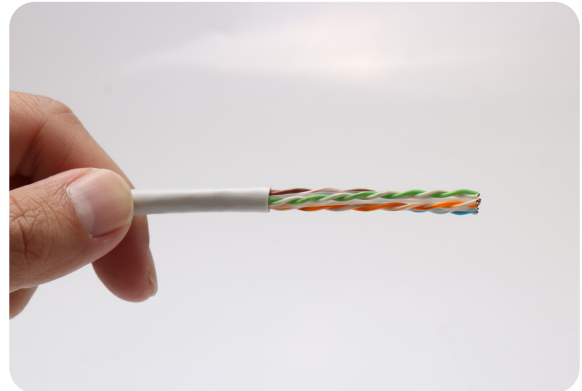
Ficha Modular RJ45 Cat.6A UTP

23-24 AWG Pass Through

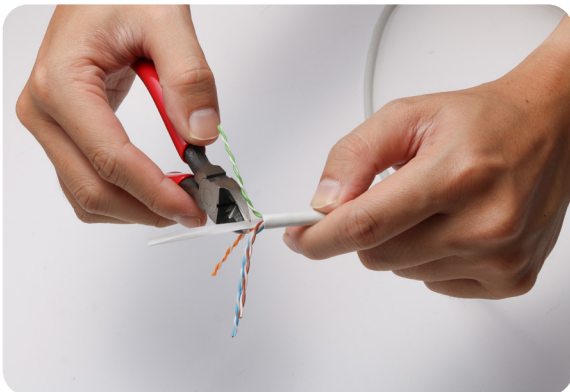
1 Coloque a capa no cabo.



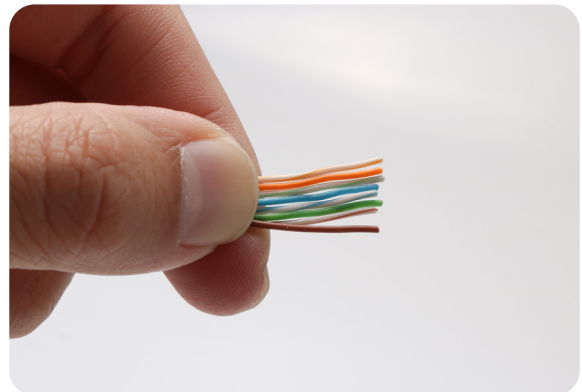
2 Descarte aproximadamente 30 mm do revestimento do cabo.



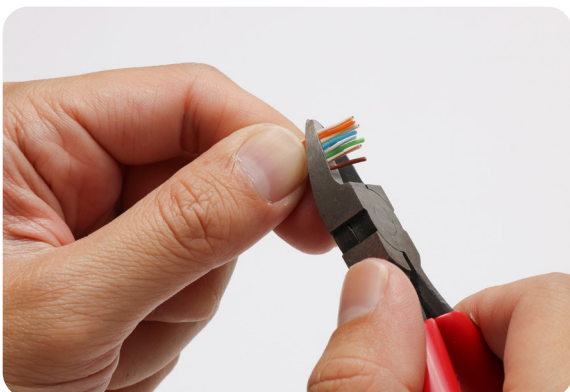
3 Separe os fios em 4 pares. Corte a cruzeta com um alicate diagonal.



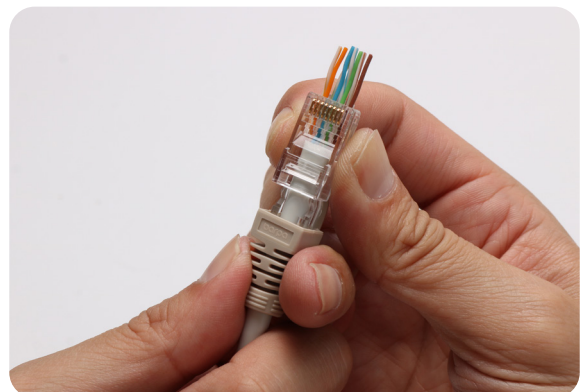
4 Alinhe os fios dos 4 pares de acordo com o esquema de cabos desejado.



5 Corte 5 mm para facilitar a passagem.



6 Passe pelo conector.



Manual de Instruções

Ficha Modular RJ45 Cat.6A UTP

23-24 AWG Pass Through

7 Crave e corte o excesso dos fios com o auxílio da Ferramenta de Cravação para Ficha Modular RJ45.



8 Pronto! Bom trabalho!



DIAGRAMA DE CODIFICAÇÃO DE CORES

EIA/TIA-568A

- 1 - Branco/Verde
- 2 - Verde
- 3 - Branco/Laranja
- 4 - Azul
- 5 - Branco/Azul
- 6 - Laranja
- 7 - Branco/Castanho
- 8 - Castanho

EIA/TIA-568B

- 1 - Branco/Laranja
- 2 - Laranja
- 3 - Branco/Verde
- 4 - Azul
- 5 - Branco/Azul
- 6 - Verde
- 7 - Branco/Castanho
- 8 - Castanho

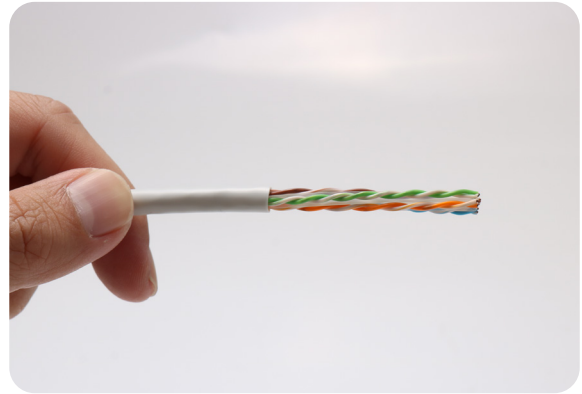
Manuel d'instructions

Connecteur Modulaire RJ45 Cat.6A UTP 23-24 AWG Avec Ouverture Frontale

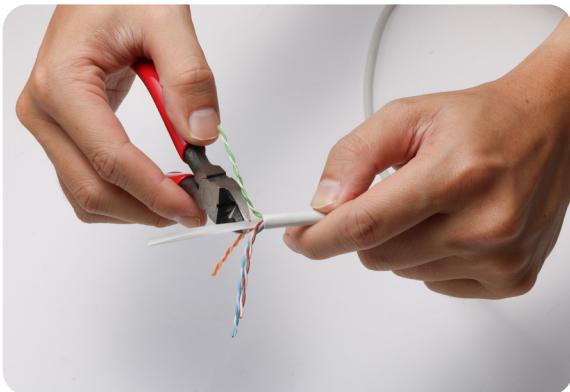
1 Mettre la manchon sur le câble.



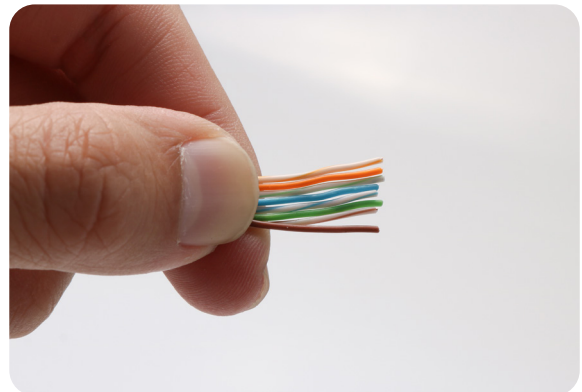
2 Enlever environ 30 mm de la gaine du câble.



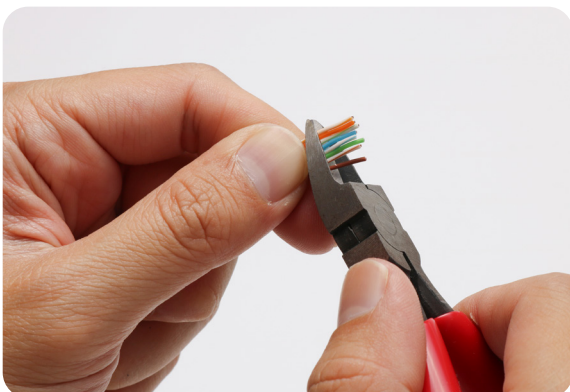
3 Séparez les fils en 4 paires. Coupez le séparateur croisé avec une pince diagonale.



4 Alignez les fils des 4 paires selon le schéma de câblage souhaité.



5 Coupez 5 mm pour faciliter le passage.



6 Passez à travers le connecteur.



Manuel d'instructions

Connecteur Modulaire RJ45 Cat.6A UTP

23-24 AWG Avec Ouverture Frontale

7 Sertissez et coupez l'excédent de fil avec la pince à sertir pour les connecteurs modulaires RJ45.



8 C'est fait! Bon travail!



DIAGRAMME DE CODAGE DES COULEURS

EIA/TIA-568A

1 - Blanc/Vert

2 - Vert

3 - Blanc/Orange

4 - Bleu

5 - Blanc/Bleu

6 - Orange

7 - Blanc/Marron

8 - Marron

EIA/TIA-568B

1 - Blanc/Orange

2 - Orange

3 - Blanc/Vert

4 - Bleu

5 - Blanc/Bleu

6 - Vert

7 - Blanc/Marron

8 - Marron